



# ***ECONOMIC INDICATORS***

**NEW SOUTH WALES**

EMBARGO: 11:30AM (CANBERRA TIME) FRI 15 OCT 1999

## **C O N T E N T S**

	<i>page</i>
Notes . . . . .	2
NSW overview. . . . .	3
Main features . . . . .	4
List of tables and graphs . . . . .	5
Population . . . . .	6
Labour . . . . .	7
Production . . . . .	10
Building . . . . .	11
Retail trade . . . . .	12
New motor vehicle registrations . . . . .	13
Tourism . . . . .	14
Consumer and producer price indexes. . . . .	15
Finance . . . . .	16
State Government finance . . . . .	17
Investment. . . . .	18
International trade. . . . .	19

- For further information about these and related statistics, contact Bill Markham on Sydney 02 9268 4376 or email [billmarkham@abs.gov.au](mailto:billmarkham@abs.gov.au) or Client Services in any ABS office as shown on the back cover of this publication.



## NSW OVERVIEW

EMPLOYMENT	Employment in NSW decreased by 9,300 (0.3%) in August 1999 to 2,933,200 in seasonally adjusted terms. National employment rose by 0.3% in August to 8,818,800.
UNEMPLOYMENT	Unemployment in NSW rose by 11.2% to a seasonally adjusted figure of 212,800 in August 1999. This increase followed four consecutive months of falling unemployment. The unemployment rate rose from 6.1% in July to 6.8% in August. The national unemployment rate was 7.2% in July, up 0.2 percentage points over the month.
JOB VACANCIES	Job vacancies in NSW in August 1999 were 36,300. This was a rise of 22.2% over the quarter and 37.5% over the past year. The corresponding national increases were 23.6% and 20.5%.
BUILDING APPROVALS	The seasonally adjusted number of new dwelling units approved for NSW in July 1999 rose by 1.3% from the previous month to 4,606.
RETAIL	In seasonally adjusted terms, total retail sales for NSW in July 1999 was \$4,046.5 million. For June 1999, the figure was \$4,043.3 million. The data contained in table 10 and table 11 have been adjusted following an improvement to the coverage of the retail frame. This improvement has reduced the level of retail turnover estimates in most industries but there has been little change to the month to month movements. The introduction of this adjusted series coincided with the normal seasonal reanalysis which has resulted in a more up-to-date seasonally adjusted series. See the source publication <i>Retail Trade, Australia</i> (Cat. no. 8501.0) for July 1999.
NEW MOTOR VEHICLE REGISTRATIONS	New motor vehicle registrations for NSW in seasonally adjusted terms in July 1999 increased slightly from the previous month to 23,486.
TOURISM	In NSW the room occupancy rate for the June quarter 1999 increased by 1.6 percentage points to 57.9% compared with the previous June quarter. There was a decrease of 2.7 percentage points compared with the March quarter 1999.
FINANCE	The seasonally adjusted value of housing finance commitments for owner occupation in NSW in July 1999 was \$2,349 million. This represented a decrease of 7.8% on the previous month and an increase of 28.6% since July 1998.
INVESTMENT	The June quarter 1999 trend estimate of total private new capital expenditure (at current prices) for NSW was \$3,484 million, a decrease of 3.5% from the previous quarter.

## MAIN FEATURES

### INVESTMENT

For total private new capital expenditure (at current prices) the June quarter 1999 trend estimate for NSW was \$3,484 million. This represented a decrease of \$128 million or 3.5% from the previous quarter, which was less than the decrease of 5.4% for Australia over the same period.

The trend estimates for expenditure on buildings and structures for NSW fell by 8.3% to \$933 million. This expenditure has been steadily decreasing over the past three quarters and is 16.6% lower than in the June quarter 1998. The trend estimates for expenditure on equipment, plant and machinery for NSW fell by \$44 million (1.7%) to \$2,551 million. This level of expenditure is 2.3% lower than in the June quarter 1998.

### TOURISM

In NSW the number of room nights occupied in licensed hotels, motels and guest houses and serviced apartments with 15 or more rooms or units in the June quarter 1999 decreased by 3.5% on the March quarter 1999 to 3,099,900. Compared to the June quarter 1998, there was an increase of 7.3%. At the national level, while the number of room nights occupied decreased by 1.7% compared with the March quarter 1999, there was an increase of 8.1% compared with the June quarter 1998.

In NSW, the room occupancy rate for licensed hotels in the June quarter 1999 was 65.0%, a rise of 3.3% from the June quarter 1998. The occupancy rate for motels and guest houses increased by 2.7% to 53.3% and the occupancy rate for serviced apartments rose by 2.1% to 59.6% over the same period.

In the Sydney Tourism Region, room occupancy rates reflected movements similar to the state level. In the June quarter 1999, the room occupancy rate for accommodation establishments overall was 68.0%, an increase of 2.6% over the year. For the June quarter 1999, room occupancy rates for licensed hotels, motels and guest houses, and serviced apartments were 70.7%, 62.3% and 69.3% respectively.

In NSW, takings from accommodation increased in aggregate for each accommodation type in the June quarter 1999 compared with the June quarter 1998 with an overall increase of 5.0% to \$332.7 million. In the Sydney Tourism Region, takings from accommodation were \$226.3 million for the June quarter 1999. Takings from accommodation in the Sydney Tourism Region accounted for 68% of the total for NSW.

## LIST OF TABLES AND GRAPHS

		page
POPULATION	<b>1</b> Estimated resident population, NSW	6
LABOUR	<b>2</b> Labour data, latest time period, NSW and Australia	7
	<b>3</b> Labour data, time series, NSW	7
	<b>4</b> Labour force status of the civilian population, NSW	8
	<b>5</b> Graph: Unemployment rates, NSW and Australia	9
	<b>6</b> Coal, electricity and gas production, latest time period, NSW and Australia	10
PRODUCTION	<b>7</b> Coal, electricity and gas production, time series, NSW	10
BUILDING	<b>8</b> Building approvals, latest time period, NSW and Australia	11
	<b>9</b> Building approvals, time series, NSW	11
RETAIL TRADE	<b>10</b> Turnover of retail establishments, latest time period, NSW and Australia	12
	<b>11</b> Turnover of retail establishments, seasonally adjusted, time series, NSW	12
NEW MOTOR VEHICLE REGISTRATIONS	<b>12</b> New motor vehicle registrations, latest time period, NSW and Australia	13
	<b>13</b> New motor vehicle registrations, seasonally adjusted, time series, NSW	13
TOURISM	<b>14</b> Accommodation establishments, latest time period, NSW and Australia	14
	<b>15</b> Accommodation establishments, time series, Sydney and NSW	14
	<b>16</b> Graph: Hotels, motels, etc., monthly room occupancy rates, Sydney Tourism Region and NSW	14
	<b>17</b> Consumer and producer price indexes, latest time period, NSW and Australia	15
CONSUMER AND PRODUCER PRICE INDEXES	<b>18</b> Consumer and producer price indexes, time series, NSW	15
	<b>19</b> Graph: Consumer Price Index, Sydney and weighted average of eight capital cities	15
	<b>20</b> Finance commitments, latest time period, NSW and Australia	16
FINANCE	<b>21</b> Finance commitments, time series, NSW	16
	<b>22</b> Government finance, budget sector, time series, NSW	17
STATE GOVERNMENT FINANCE	<b>23</b> Actual private new fixed capital expenditure, latest time period, NSW and Australia	18
	<b>24</b> Actual private new fixed capital expenditure, time series, NSW	18
	<b>25</b> Graph: Actual private new fixed capital expenditure by type of asset, trend estimate, NSW	18
	<b>26</b> Imports and exports, latest time period, NSW and Australia	19
INTERNATIONAL TRADE	<b>27</b> Imports and exports, time series, NSW	19

Period	Estimated resident population at end of period			Increase during period			Mean estimated resident population for year ended	
	Males	Females	Persons	Natural increase(a)	Net estimated migration	Total increase(b)	30 June	31 December
	'000	'000	'000	'000	'000	'000	'000	'000
<b>1996</b>	3 098.9	3 143.1	6 241.9	41.8	31.3	73.1	6 167.2	6 204.2
<b>1997</b>	r 3 128.9	r 3 171.5	r 6 300.5	r 40.9	r 17.6	r 58.5	6 240.9	6 276.1
<b>1998</b>	r 3 168.3	r 3 207.8	r 6 376.2	r 40.5	r 35.2	r 75.7	6 307.1	6 344.3
<b>1997</b>								
December qtr r	3 128.9	3 171.5	6 300.5	10.8	0.6	11.5	..	..
<b>1998</b>								
March qtr r	3 139.1	3 180.4	6 319.6	10.3	8.8	19.1	..	..
June qtr r	3 146.3	3 187.2	6 333.5	9.9	4.1	14.0	..	..
September qtr r	3 157.3	3 197.6	6 354.9	8.2	13.2	21.4	..	..
December qtr r	3 168.3	3 207.8	6 376.2	12.1	9.1	21.2	..	..
<b>1999</b>								
March qtr	3 179.0	3 218.2	6 397.2	9.1	11.9	21.0	..	..

(a) Excess of live births over deaths.

(b) For dates prior to June 1996, differences between the total increase shown and the sum of the natural increase and net estimated migration arise from retrospective adjustments to population estimates (which are made after each Census) to compensate for any intercensal discrepancy. A description of intercensal discrepancy is contained in the ABS Information Paper: Demographic Estimates—Concepts, Sources and Methods (Cat. no. 3228.0).

Source: Australian Demographic Statistics (Cat. no. 3101.0).

	Unit	New South Wales				Australia		
		Latest period	Latest figure	Change from prior period	Change from same period prior year	Latest figure	Change from prior period	Change from same period prior year
				%	%		%	%
Employed persons (seasonally adjusted)	'000	Aug 99	2 933.2	-0.3	2.9	8 818.8	0.3	2.3
Unemployed persons (seasonally adjusted)	'000	Aug 99	212.8	11.2	-7.8	682.6	3.3	-9.7
Labour force (seasonally adjusted)	'000	Aug 99	3 146.0	0.4	2.1	9 501.4	0.5	1.3
Participation rate (seasonally adjusted)	%	Aug 99	61.9	0.3	-0.2	63.3	0.5	-0.2
Unemployment rate (seasonally adjusted)	%	Aug 99	6.8	11.5	-9.3	7.2	2.9	-11.1
Industrial disputes—working days lost	'000	Jun 99	3.9	25.8	-88.1	28.1	67.3	-61.3
Job vacancies	'000	Aug 99	36.3	22.2	37.5	88.0	23.6	20.5
Average weekly employee earnings—full-time adult ordinary time earnings (seasonally adjusted)	\$	May 99	791.8	1.1	5.7	750.9	1.1	3.3

Source: Average Weekly Earnings, States and Australia (Cat. no. 6302.0), Industrial Disputes, Australia (Cat. no. 6321.0), Job Vacancies and Overtime, Australia (Cat. no. 6354.0), Labour Force, Australia, Preliminary (Cat. no. 6202.0).

	Seasonally adjusted						
	Employed persons	Unemployed persons	Labour force	Participation rate	Unemployment rate	Industrial disputes (working days lost)	Job vacancies
	'000	'000	'000	%	%	'000	'000
<b>1998</b>							
June	2 868.8	233.5	3 102.3	62.0	7.5	32.9	..
July	2 890.0	230.9	3 120.9	62.3	7.4	10.3	..
August	2 851.9	230.8	3 082.7	61.5	7.5	20.8	26.4
September	2 895.0	227.3	3 122.3	62.2	7.3	7.6	..
October	2 904.6	207.2	3 111.8	61.9	6.7	8.9	..
November	2 859.4	238.2	3 097.6	61.6	7.7	10.6	24.1
December	2 891.5	211.5	3 103.0	61.6	6.8	28.8	..
<b>1999</b>							
January	2 884.6	215.2	3 099.8	61.5	6.9	2.7	..
February	2 906.0	208.7	3 114.7	61.7	6.7	40.3	24.4
March	2 903.5	219.8	3 123.3	61.8	7.0	7.8	..
April	2 901.0	216.1	3 117.1	61.6	6.9	2.1	..
May	2 918.7	203.5	3 122.2	61.6	6.5	r 3.1	29.7
June	2 929.1	200.0	3 129.1	61.7	6.4	3.9	..
July	2 942.5	191.3	3 133.8	61.7	6.1	n.y.a.	..
August	2 933.2	212.8	3 146.0	61.9	6.8	n.y.a.	36.3

Source: Industrial Disputes, Australia (Cat. no. 6321.0), Job Vacancies and Overtime, Australia (Cat. no. 6354.0), Labour Force, Australia, Preliminary (Cat. no. 6202.0).

	<i>Employed</i>		<i>Unemployed</i>		<i>Labour force</i>	<i>Not in labour force</i>	<i>Civilian population aged 15 years and over</i>	<i>Unemployment rate(a)</i>	<i>Participation rate(b)</i>
	<i>Full-time workers</i>	<i>Total</i>	<i>Looking for full-time work</i>	<i>Total</i>					
	'000	'000	'000	'000					
MALES									
<b>August</b>									
1995	1 403.8	1 571.3	121.8	133.9	1 705.1	658.4	2 363.5	7.9	72.1
1996	1 401.1	1 586.0	127.6	146.7	1 732.7	663.3	2 396.0	8.5	72.3
1997	1 390.1	1 567.2	118.7	133.6	1 700.7	727.2	2 428.0	7.9	70.0
<b>1998</b>									
June	1 444.7	1 626.2	116.7	133.8	1 760.0	697.0	2 457.0	7.6	71.6
July	1 465.0	1 641.6	114.2	126.6	1 768.2	691.5	2 459.7	7.2	71.9
August	1 424.3	1 599.4	115.5	134.6	1 734.1	728.4	2 462.4	7.8	70.4
September	1 466.6	1 649.3	117.0	134.2	1 783.4	681.8	2 465.2	7.5	72.3
October	1 460.5	1 648.9	96.8	110.5	1 759.4	709.0	2 468.4	6.3	71.3
November	1 441.2	1 633.0	112.0	129.4	1 762.4	709.1	2 471.5	7.3	71.3
December	1 467.6	1 658.3	107.6	121.5	1 779.8	695.0	2 474.7	6.8	71.9
<b>1999</b>									
January	1 447.1	1 633.0	124.6	140.8	1 773.8	703.8	2 477.5	7.9	71.6
February	1 453.4	1 644.9	113.5	133.1	1 778.0	702.4	2 480.3	7.5	71.7
March	1 454.3	1 661.9	102.9	126.1	1 788.0	695.2	2 483.1	7.1	72.0
April	1 456.1	1 657.8	95.6	115.5	1 773.3	713.3	2 486.6	6.5	71.3
May	1 460.0	1 662.7	93.3	110.1	1 772.8	717.2	2 490.0	6.2	71.2
June	1 459.4	1 668.1	91.6	108.0	1 776.1	717.3	2 493.4	6.1	71.2
July	1 491.8	1 687.4	83.2	101.3	1 788.7	707.7	2 496.4	5.7	71.7
August	1 464.1	1 662.6	95.9	115.3	1 777.8	721.6	2 499.4	6.5	71.1
FEMALES									
<b>August</b>									
1995	710.2	1 182.9	59.7	92.1	1 275.0	1 175.3	2 450.3	7.2	52.0
1996	722.5	1 195.2	59.4	89.5	1 284.7	1 202.6	2 487.4	7.0	51.6
1997	705.2	1 184.5	64.5	92.0	1 276.5	1 242.8	2 519.3	7.2	50.7
<b>1998</b>									
June	730.2	1 245.8	57.1	88.3	1 334.1	1 211.8	2 545.9	6.6	52.4
July	765.8	1 259.0	59.7	88.2	1 347.2	1 201.3	2 548.5	6.5	52.9
August	724.7	1 220.6	62.4	85.0	1 305.5	1 245.5	2 551.1	6.5	51.2
September	756.9	1 276.0	61.7	97.1	1 373.1	1 180.6	2 553.7	7.1	53.8
October	751.4	1 258.7	54.8	90.3	1 349.0	1 207.6	2 556.6	6.7	52.8
November	733.3	1 235.5	61.0	96.8	1 332.3	1 227.2	2 559.6	7.3	52.1
December	762.7	1 276.6	57.4	86.6	1 363.3	1 199.2	2 562.5	6.4	53.2
<b>1999</b>									
January	739.5	1 218.0	62.6	90.1	1 308.0	1 257.1	2 565.1	6.9	51.0
February	738.4	1 236.4	67.4	104.5	1 340.9	1 226.8	2 567.7	7.8	52.2
March	728.8	1 238.3	64.3	108.7	1 347.0	1 223.3	2 570.2	8.1	52.4
April	726.0	1 242.6	62.5	98.5	1 341.2	1 232.0	2 573.2	7.3	52.1
May	729.5	1 250.2	56.8	90.0	1 340.3	1 235.9	2 576.1	6.7	52.0
June	746.9	1 264.6	52.3	81.5	1 346.2	1 232.9	2 579.1	6.1	52.2
July	754.9	1 265.7	53.2	76.5	1 342.2	1 239.8	2 582.0	5.7	52.0
August	723.4	1 237.1	54.9	86.7	1 323.8	1 261.2	2 584.9	6.5	51.2

For footnotes see end of table.



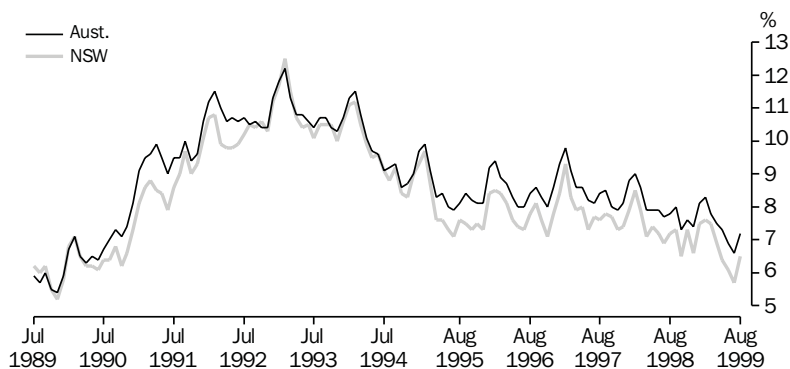
	<u>Employed</u>		<u>Unemployed</u>		Labour force	Not in labour force	Civilian population aged 15 years and over	Unemployment rate(a)	Participation rate(b)
	Full-time workers	Total	Looking for full-time work	Total					
	'000	'000	'000	'000					
PERSONS									
<b>August</b>									
1995	2 114.0	2 754.2	181.5	226.0	2 980.2	1 833.7	4 813.8	7.6	61.9
1996	2 123.6	2 781.2	187.0	236.2	3 017.4	1 865.9	4 883.3	7.8	61.8
1997	2 095.3	2 751.7	183.2	225.6	2 977.2	1 970.0	4 947.2	7.6	60.2
<b>1998</b>									
June	2 174.8	2 872.0	173.8	222.1	3 094.1	1 908.8	5 002.9	7.2	61.8
July	2 230.8	2 900.5	173.8	214.8	3 115.3	1 892.8	5 008.2	6.9	62.2
August	2 149.1	2 820.0	177.9	219.6	3 039.6	1 973.9	5 013.5	7.2	60.6
September	2 223.5	2 925.2	178.7	231.3	3 156.5	1 862.4	5 018.9	7.3	62.9
October	2 211.9	2 907.6	151.6	200.8	3 108.4	1 916.6	5 025.0	6.5	61.9
November	2 174.5	2 868.5	173.0	226.3	3 094.7	1 936.4	5 031.1	7.3	61.5
December	2 230.2	2 934.9	165.0	208.1	3 143.1	1 894.2	5 037.2	6.6	62.4
<b>1999</b>									
January	2 186.6	2 850.9	187.1	230.9	3 081.8	1 960.9	5 042.6	7.5	61.1
February	2 191.8	2 881.3	180.9	237.5	3 118.8	1 929.2	5 048.0	7.6	61.8
March	2 183.2	2 900.2	167.2	234.8	3 134.9	1 918.4	5 053.4	7.5	62.0
April	2 182.1	2 900.4	158.1	214.0	3 114.5	1 945.3	5 059.8	6.9	61.6
May	2 189.6	2 912.9	150.2	200.1	3 113.1	1 953.1	5 066.1	6.4	61.4
June	2 206.3	2 932.7	143.9	189.6	3 122.3	1 950.3	5 072.5	6.1	61.6
July	2 246.7	2 953.2	136.4	177.8	3 131.0	1 947.5	5 078.5	5.7	61.7
August	2 187.6	2 899.6	150.8	202.0	3 101.6	1 982.8	5 084.4	6.5	61.0

(a) The number of unemployed in each group expressed as a percentage of the labour force in the same group.

(b) The labour force in each group expressed as a percentage of the civilian population aged 15 years and over in the same group.

Source: Labour Force, Australia, Preliminary (Cat. no. 6202.0).

## 5 UNEMPLOYMENT RATE—ORIGINAL



Source: Labour Force, Australia, Preliminary (Cat. no. 6202.0).

	Unit	Latest period	New South Wales				Australia		
			Latest figure	Change from prior period	Change from same period prior year	Latest figure	Change from prior period	Change from same period prior year	
				%	%		%	%	
Raw coal won—									
Underground	'000 tonnes	Jun 99	5 209	11.7	7.6	9 070	14.7	44.7	
Open cut	'000 tonnes	Jun 99	7 448	18.2	9.4	17 369	-1.5	17.6	
Total	'000 tonnes	Jun 99	12 657	15.4	8.6	26 439	3.5	25.7	
Electricity	mill. kWh	Jun qtr 99	16 365	4.8	5.2	45 227	0.3	2.1	
Gas(a)	teraJ	Jun qtr 99	30 428	36.0	2.8	181 952	25.5	4.3	

(a) Available for issue through mains. Includes ACT.

Source: Joint Coal Board for NSW and Australia from ABS unpublished statistics, Manufacturing Production, Australia (Cat. no. 8301.0).

	Raw coal won			Electricity	Gas(a)
	Underground	Open cut	Total		
	'000 tonnes	'000 tonnes	'000 tonnes		
<b>1996-97</b>	54 642	69 036	123 678	62 788	109 284
<b>1997-98</b>	58 299	75 710	134 009	61 804	111 665
<b>1998-99</b>	51 158	80 209	131 367	63 743	110 092
<b>1998</b>					
April	5 160	7 052	12 212	15 561	29 614
May	4 648	5 851	10 499		
June	4 842	6 811	11 653		
July	5 130	7 241	12 371	16 543	32 258
August	3 788	5 616	9 404		
September	4 734	6 372	11 106		
October	4 732	7 131	11 863	15 227	25 039
November	3 988	6 931	10 919		
December	3 346	6 500	9 846		
<b>1999</b>					
January	3 273	6 159	9 432	15 609	22 367
February	3 848	6 913	10 761		
March	4 921	7 827	12 748		
April	3 525	5 768	9 293	16 365	30 428
May	4 664	6 303	10 967		
June	5 209	7 448	12 657		

(a) Available for issue through mains. Includes ACT.

Source: Joint Coal Board, Manufacturing Production, Australia (Cat. no. 8301.0).

	Unit	Latest period	New South Wales			Australia		
			Latest figure	Change from prior period %	Change from same period prior year %	Latest figure	Change from prior period %	Change from same period prior year %
Number of dwelling units(a) (seasonally adjusted)—								
New houses	no.	Jul 99	2 762	12.1	10.8	9 940	6.0	9.3
Total	no.	Jul 99	4 606	1.3	-7.0	14 197	3.1	6.6
Value of new residential building (seasonally adjusted)	\$m	Jul 99	608.6	0.5	7.0	1 621.0	-2.5	17.0
Value of alterations and additions to residential building(b) (seasonally adjusted)	\$m	Jul 99	103.9	14.1	-18.2	284.9	17.4	6.4
Value of non-residential building(c) (original)	\$m	Jul 99	521.2	3.5	58.0	1 153.4	21.6	30.9
Value of all building (original)	\$m	Jul 99	1 258.8	7.5	14.1	3 209.7	13.4	18.6

(a) Includes dwelling units approved as part of the construction of non-residential building and alterations and additions to existing buildings (including conversions to dwelling units).

(b) Valued at \$10,000 or more. Includes conversions of existing buildings into residential buildings.

(c) Valued at \$50,000 or more.

Source: *Building Approvals, Australia* (Cat. no. 8731.0).

	Number of dwelling units(a), seasonally adjusted				Value of building approvals			
	New houses		Total		Seasonally adjusted		Original	
	Private sector	Total	Private sector	Total	New residential building	Alterations and additions to residential building(b)	Non-residential building(c)	All building
	no.	no.	no.	no.	\$m	\$m	\$m	\$m
<b>1996-97</b>	..	..	..	..	..	..	5 169.2	11 356.6
<b>1997-98</b>	..	..	..	..	..	..	5 910.9	13 348.6
<b>1998-99</b>	..	..	..	..	..	..	4 534.9	11 872.4
<b>1998</b>								
May	2 449	2 463	4 129	4 227	509.9	131.7	645.7	1 335.0
June	2 585	2 628	5 027	5 116	569.3	141.9	534.3	1 214.8
July	2 305	2 492	4 628	4 954	569.0	127.0	329.9	1 103.2
August	1 999	2 017	3 696	3 866	453.9	94.1	612.0	1 158.0
September	2 051	2 073	3 810	3 904	423.1	101.5	322.9	867.3
October	2 336	2 346	4 062	4 225	488.4	88.7	313.5	862.1
November	2 272	2 337	4 109	4 420	535.4	92.9	461.5	1 180.1
December	2 333	2 358	4 274	4 451	530.7	91.9	234.8	840.5
<b>1999</b>								
January	2 237	2 262	4 182	4 286	503.7	92.5	297.4	757.2
February	2 413	2 428	4 052	4 126	508.7	104.8	432.0	996.2
March	2 459	2 476	4 141	4 277	497.8	90.0	395.5	1 013.6
April	2 266	2 275	4 194	4 265	482.8	89.1	207.3	781.6
May	2 582	2 610	4 174	4 252	527.0	108.5	424.4	1 141.4
June	2 452	2 464	4 478	4 548	605.4	91.1	503.7	1 171.2
July	2 750	2 762	4 442	4 606	608.6	103.9	521.2	1 258.8

(a) Includes dwelling units approved as part of the construction of non-residential building and alterations and additions to existing buildings (including conversions to dwelling units).

(b) Valued at \$10,000 or more. Includes conversions of existing buildings into residential buildings.

(c) Valued at \$50,000 or more.

Source: *Building Approvals, Australia* (Cat. no. 8731.0).

	Latest period	New South Wales			Australia		
		Latest figure	Change from prior period	Change from same period prior year	Latest figure	Change from prior period	Change from same period prior year
		\$m	%	%	\$m	%	%
Food retailing	Jul 99	1 535.9	-0.1	3.2	4 742.5	0.7	4.6
Department stores	Jul 99	364.3	6.1	-2.7	1 068.6	7.7	-2.1
Clothing and soft good retailing	Jul 99	278.6	-2.3	1.9	770.7	-2.8	4.1
Household good retailing	Jul 99	395.7	1.4	-1.2	1 280.2	-0.5	6.1
Recreational good retailing	Jul 99	216.3	6.6	11.4	617.1	2.1	6.6
Other retailing	Jul 99	409.9	0.2	3.4	1 230.2	1.3	7.8
Hospitality and services	Jul 99	845.9	-3.3	13.1	2 023.3	0.9	11.9
<b>Total value of retail sales</b>	<b>Jul 99</b>	<b>4 046.5</b>	<b>0.1</b>	<b>4.4</b>	<b>11 732.6</b>	<b>1.1</b>	<b>5.7</b>

(a) The figures shown are derived from a monthly survey of retail establishments. Excludes motor vehicle, boat and caravan dealers, service stations, smash repairers, tyre and battery retailers, bread and milk vendors, footwear repairers and electrical appliance repairers n.e.c. Retail establishments which do not have employees are excluded from the survey. Turnover includes retail sales, wholesale sales, takings from repairs, meals and hiring of goods; and commissions from agency activity (e.g. commissions received from collecting dry cleaning, selling lottery tickets etc.).

Source: Retail Trade, Australia (Cat. no. 8501.0).

	Food retailing	Department stores	Clothing and soft good retailing	Household good retailing	Recreational good retailing	Other retailing	Hospitality and services	Total
	\$m	\$m	\$m	\$m	\$m	\$m	\$m	\$m
<b>1998</b>								
May	1 481.6	347.2	286.0	403.7	195.6	392.6	736.5	3 843.2
June	1 498.8	320.9	268.9	395.7	196.3	404.9	736.8	3 822.3
July	1 488.4	374.6	273.3	400.4	194.2	396.5	748.2	3 875.7
August	1 471.0	341.2	280.2	401.9	186.5	390.3	743.5	3 814.6
September	1 495.8	353.8	288.7	389.3	190.6	401.5	755.8	3 875.7
October	1 527.1	348.7	302.1	384.8	196.0	379.7	768.7	3 907.1
November	1 512.0	365.1	289.7	382.5	195.1	381.9	793.8	3 920.0
December	1 503.3	344.4	284.2	371.5	192.8	386.6	769.6	3 852.5
<b>1999</b>								
January	1 548.1	387.7	291.7	408.0	202.3	399.5	840.3	4 077.2
February	1 527.5	355.9	283.2	380.6	196.4	401.0	867.2	4 011.9
March	1 568.7	364.2	287.5	375.8	210.3	390.0	880.6	4 077.0
April	1 518.6	360.1	296.9	389.6	208.5	417.6	876.6	4 068.0
May	1 526.4	353.6	282.2	387.3	198.4	425.8	884.0	4 057.7
June	1 537.4	343.3	285.2	390.3	203.0	409.0	875.1	4 043.3
July	1 535.9	364.3	278.6	395.7	216.3	409.9	845.9	4 046.5

(a) The figures shown are derived from a monthly survey of retail establishments. Excludes motor vehicle, boat and caravan dealers, service stations, smash repairers, tyre and battery retailers, bread and milk vendors, footwear repairers and electrical appliance repairers n.e.c. Retail establishments which do not have employees are excluded from the survey. Turnover includes retail sales, wholesale sales, takings from repairs, meals and hiring of goods; and commissions from agency activity (e.g. commissions received from collecting dry cleaning, selling lottery tickets etc.).

Source: Retail Trade, Australia (Cat. no. 8501.0).

	Latest period	New South Wales			Australia		
		Latest figure	Change from prior period	Change from same period prior year	Latest figure	Change from prior period	Change from same period prior year
		no.	%	%	no.	%	%
Passenger vehicles	Jul 99	19 603	-2.7	-8.7	51 605	-8.3	-13.9
Other vehicles (excluding motor cycles)	Jul 99	3 883	17.8	17.1	10 956	7.3	7.9
Total registrations (excluding motor cycles)	Jul 99	23 486	0.2	-5.3	62 561	-5.9	-10.7

(a) Includes vehicles (other than those of the defence forces) owned by Government departments and authorities. Excludes mobile plant and equipment, tractors, trailers and non-motorised caravans.

Source: *New Motor Vehicle Registrations, Australia, Preliminary (Cat. no. 9301.0)*.

	Passenger vehicles	Other vehicles (excluding motor cycles)	Total (excluding motor cycles)
	no.	no.	no.
<b>1998</b>			
May	18 745	3 207	21 952
June	21 013	3 245	24 258
July	21 482	3 315	24 796
August	19 089	3 266	22 355
September	20 003	3 214	23 217
October	18 356	3 375	21 731
November	19 815	3 398	23 212
December	19 616	3 501	r 23 116
<b>1999</b>			
January	18 567	3 610	22 177
February	18 151	3 353	21 504
March	19 978	3 623	23 601
April	r 19 041	r 3 369	22 410
May	18 801	3 126	21 927
June	20 137	3 295	23 432
July	19 603	3 883	23 486

(a) Includes vehicles (other than those of the defence forces) owned by Government departments and authorities. Excludes mobile plant and equipment, tractors, trailers and non-motorised caravans.

Source: *New Motor Vehicle Registrations, Australia, Preliminary (Cat. no. 9301.0)*.

	New South Wales						Australia	
	Unit	Latest period	Latest figure	Change from prior period	Change from same period prior year	Latest figure	Change from prior period	Change from same period prior year
				%	%		%	%
Room nights	'000	Jun qtr 99	3 099.9	-3.5	7.3	9 427.3	-1.7	8.1
Room occupancy rate	%	Jun qtr 99	57.9	-4.5	2.8	56.2	-3.3	2.9
Takings	\$'000	Jun qtr 99	332 669	-7.8	5.0	946 366	-5.7	7.4

(a) Licensed hotels with facilities, motels and guest houses and serviced apartments with 15 or more rooms or units.

Source: *Tourist Accommodation, Australia (Cat. no. 8635.0)*.

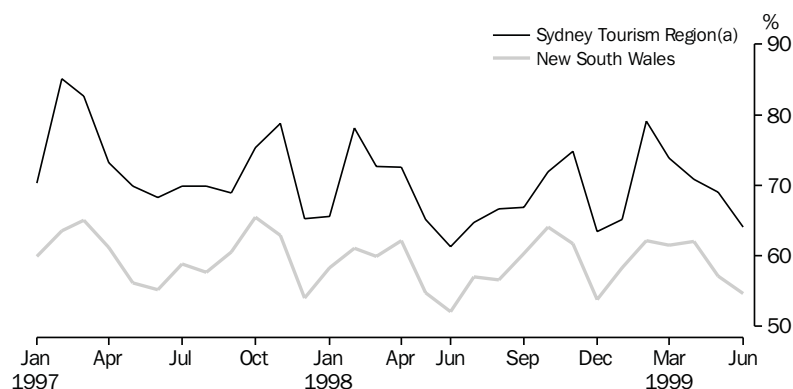
## 15 ACCOMMODATION ESTABLISHMENTS(a), SYDNEY AND NSW—ORIGINAL

	Sydney Tourism Region(b)			New South Wales		
	Room nights	Room occupancy rate	Takings	Room nights	Room occupancy rate	Takings
	'000	%	\$'000	'000	%	\$'000
<b>1998</b>						
March qtr	1 664.9	71.9	235 516	3 017.3	59.8	343 248
June qtr	1 568.3	66.3	216 500	2 890.3	56.3	316 721
September qtr	1 640.0	66.1	222 944	3 077.3	57.9	342 102
December qtr	1 777.0	70.0	246 125	3 210.5	59.8	359 172
<b>1999</b>						
March qtr	1 828.8	72.5	248 997	3 213.2	60.6	360 674
June qtr	1 731.3	68.0	226 273	3 099.9	57.9	332 669

(a) Licensed hotels with facilities, motels and guest houses and serviced apartments with 15 or more rooms or units.

(b) Excludes Gosford, Wyong and Blue Mountains Statistical Local Areas.

Source: *Tourist Accommodation, Small Area Data, NSW (Prod. no. 8635.1.40.001)*.

16 ACCOMMODATION ESTABLISHMENTS,  
MONTHLY ROOM OCCUPANCY RATE—ORIGINAL

(a) Excludes Gosford, Wyong and Blue Mountains Statistical Local Areas.

Source: *Tourist Accommodation, Small Area Data, NSW (Prod. no. 8635.1.40.001)*.

	Unit	Latest period	New South Wales(a)			Australia(b)		
			Latest figure	Change from prior period	Change from same period prior year	Latest figure	Change from prior period	Change from same period prior year
				%	%		%	%
Consumer Price Index (all groups)	1989-90 =100.0	Jun qtr 99	123.0	0.3	1.3	122.3	0.4	1.1
Price index of materials used in house building (all groups)	1989-90 =100.0	Jun qtr 99	121.8	-0.2	0.9	119.2	-0.3	0.2
Price index of materials used in building other than house building (all groups)	1989-90 =100.0	Jun qtr 99	115.4	0.2	0.5	115.4	0.2	0.8

(a) Refers to State capital city—Sydney.

(b) For the Consumer Price Index this is the weighted average of eight capital cities and for the other two indexes, the weighted average of the six State capital cities.

Source: Consumer Price Index, Australia (Cat. no. 6401.0), Price Index of Materials Used in Building Other Than House Building, Six State Capital Cities (Cat. no. 6407.0), Price Index of Materials Used in House Building, Six State Capital Cities (Cat. no. 6408.0).

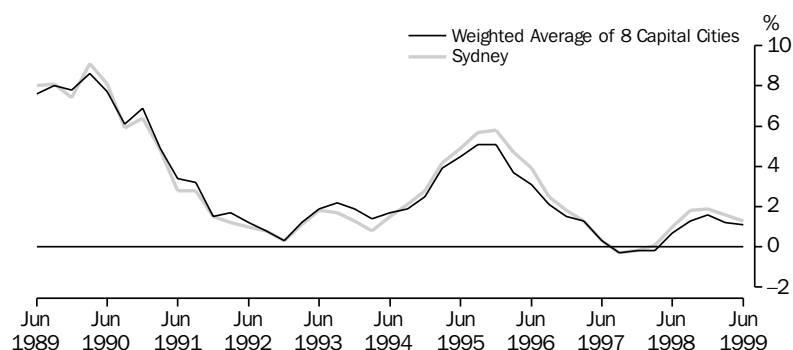
## 18 CONSUMER AND PRODUCER PRICE INDEXES—NSW(a)

Period	Consumer Price Index, all groups	Price Index of materials used in house building, all groups	Price Index of materials used in building other than house building, all groups
	1989-90 = 100.0	1989-90 = 100.0	1989-90 = 100.0
<b>1998</b>			
March qtr	120.7	120.8	114.4
June qtr	121.4	120.7	114.8
September qtr	121.9	120.8	115.0
December qtr	122.4	121.8	115.1
<b>1999</b>			
March qtr	122.6	122.0	115.2
June qtr	123.0	121.8	115.4

(a) Refers to State capital city—Sydney.

Source: Consumer Price Index, Australia (Cat. no. 6401.0), Price Index of Materials Used in Building Other Than House Building, Six State Capital Cities (Cat. no. 6407.0), Price Index of Materials Used in House Building, Six State Capital Cities (Cat. no. 6408.0).

## 19 CONSUMER PRICE INDEX, ANNUAL RATE OF CHANGE



Source: Consumer Price Index (Cat. no. 6401.0).

## SECURED HOUSING FINANCE COMMITMENTS TO INDIVIDUALS FOR OWNER OCCUPATION—NSW AND AUSTRALIA

	Latest period	New South Wales			Australia		
		Latest figure	Change from prior period	Change from same period prior year	Latest figure	Change from prior period	Change from same period prior year
				%			%
		\$m	%	%	\$m	%	%
Lending commitments for the construction or purchase of dwellings—							
Construction of dwellings	Jul 99	272	-9.3	3.4	887	-6.5	13.8
Purchase of newly erected dwellings	Jul 99	97	-16.9	-21.3	245	-5.4	-5.6
Purchase of established dwellings(a)	Jul 99	1 787	-3.5	39.2	3 893	-4.9	28.2
Refinancing of existing dwellings	Jul 99	338	-19.1	-10.1	870	-11.4	-1.7
Lending commitments for alterations and additions	Jul 99	93	-11.1	-3.8	248	-11.4	11.8
Total lending commitments to individuals for housing(b)	Jul 99	2 493	-7.2	21.9	5 895	-6.2	18.9
Total lending commitments to individuals for housing (seasonally adjusted)(b)	Jul 99	2 349	-7.8	28.6	5 664	-3.4	24.4

(a) Excludes refinancing.

(b) Excludes alterations and additions.

Source: *Housing Finance for Owner Occupation, Australia (Cat. no. 5609.0)*.

## SECURED HOUSING FINANCE COMMITMENTS TO INDIVIDUALS FOR OWNER OCCUPATION—NSW

	Lending commitments for the construction or purchase of dwellings				Total lending commitments to individuals for housing(b)		
	Construction of dwellings	Purchase of newly erected dwellings	Purchase of established dwellings(a)	Refinancing of existing dwellings	Lending commitments for alterations and additions	Original	Seasonally adjusted
	\$m	\$m	\$m	\$m	\$m	\$m	\$m
<b>1996-97</b>	2 117	1 234	12 566	4 062	1 221	19 979	..
<b>1997-98</b>	2 625	1 280	14 445	3 573	1 174	r 21 923	..
<b>1998-99</b>	r 2 990	1 147	r 16 761	r 4 026	1 126	r 24 925	..
<b>1998</b>							
May	216	95	1 261	312	99	1 885	1 818
June	262	116	1 360	359	102	2 097	2 037
July	263	123	1 284	376	97	2 045	1 827
August	224	93	1 171	307	85	1 796	1 796
September	242	105	1 158	326	86	1 831	1 755
October	222	95	1 220	302	85	1 838	1 902
November	229	100	1 357	337	91	2 024	2 004
December	235	96	1 343	295	82	1 970	2 095
<b>1999</b>							
January	176	63	1 025	249	74	1 512	2 094
February	239	75	1 223	312	89	1 849	1 907
March	341	106	1 741	407	126	2 595	2 207
April	242	79	1 600	333	97	2 255	2 293
May	276	96	1 787	364	110	2 524	2 408
June	r 300	116	r 1 851	r 418	105	r 2 686	r 2 548
July	272	97	1 787	338	93	2 493	2 349

(a) Excludes refinancing.

(b) Excludes alterations and additions.

Source: *Housing Finance for Owner Occupation, Australia (Cat. no. 5609.0)*.



	<i>Actual</i>	<i>Estimates</i>
	<i>11 months ended 31 May 1999</i>	<i>12 months ended 30 June 1999</i>
	<i>\$m</i>	<i>\$m</i>
<b>Current receipts—</b>		
Stamp duties	3 588	3 459
Payroll tax	3 317	3 621
Land tax	835	945
Motor vehicle taxes	947	1 002
Gaming and betting	1 221	1 440
Commonwealth safety net taxes	1 801	1 873
Other taxes	1 112	1 095
Commonwealth general purpose grants	4 238	4 731
Commonwealth specific purpose grants	3 118	3 230
Dividends/tax equivalents	1 126	1 251
Other current receipts	1 104	1 202
<i>Total current receipts</i>	<i>22 407</i>	<i>23 849</i>
<b>Current payments—</b>		
Interest payments	1 060	1 276
Superannuation	1 344	1 462
Subsidies to non-budget sector—		
Redundancies	73	77
Services	845	798
Departmental payments—		
Redundancies	60	53
Health	5 298	5 706
Education	4 902	5 364
Law and order	1 636	1 733
Community services	1 126	1 217
Other	5 257	5 693
Treasurer's advances	..	125
Less User charges	-1 865	-2 014
<i>Total current outlays</i>	<i>19 736</i>	<i>21 490</i>
<b>Current result surplus/deficit(-)</b>	<b>2 671</b>	<b>2 359</b>
<b>Capital receipts—</b>		
Commonwealth specific purpose grants	738	788
Other capital receipts	379	10
<i>Total capital receipts</i>	<i>1 117</i>	<i>798</i>
<b>Capital outlays—</b>		
Gross fixed capital payments	2 466	2 841
Capital grants	973	1 016
Less Asset sales	-504	-745
<i>Total capital outlays</i>	<i>2 935</i>	<i>3 112</i>
<b>Capital result surplus/deficit(-)</b>	<b>-1 818</b>	<b>-2 314</b>
<b>Government Finance Statistics result surplus/deficit(-)</b>	<b>853</b>	<b>45</b>

(a) Includes Department of Training and Education Co-ordination, Department of School Education, Office of the Board of Studies and TAFE.

(b) Includes Attorney Generals Department, Department of Corrective Services and Police Services.

(c) Expenditure from the Treasurer's Advance is included in the relevant current payments figures.

Note: Please note that comparative figures for 1997-98 are not available due to changes in coverage of data from General Government Budget to all General Government by the New South Wales Treasury.

Source: Financial Statement released by NSW Treasury. Figures may differ from data published in annual ABS publications.

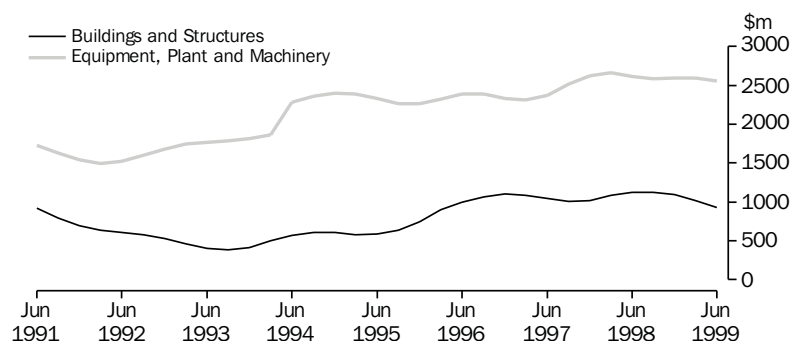
Type of asset—	Latest period	New South Wales			Australia		
		Latest figure	Change from prior period	Change from same period prior year	Latest figure	Change from prior period	Change from same period prior year
		\$m	%	%	\$m	%	%
New buildings and structures	Jun qtr	933	-8.3	-16.6	2 965	-11.4	-18.3
Equipment, plant and machinery	Jun qtr	2 551	-1.7	-2.3	7 513	-2.8	-8.5
<b>Total</b>	<b>Jun qtr</b>	<b>3 484</b>	<b>-3.5</b>	<b>-6.6</b>	<b>10 478</b>	<b>-5.4</b>	<b>-11.5</b>

Source: State Estimates of Private New Capital Expenditure (Cat. no. 5646.0).

	Type of asset		
	New buildings and structures	Equipment, plant and machinery	Total
	\$m	\$m	\$m
<b>1998</b>			
March qtr	1 081	2 660	3 741
June qtr	1 119	2 610	3 729
September qtr	1 126	2 587	3 713
December qtr	1 092	2 598	3 690
<b>1999</b>			
March qtr	1 017	2 595	3 612
June qtr	933	2 551	3 484

Source: State Estimates of New Capital Expenditure (Cat. no. 5646.0).

## 25 ACTUAL PRIVATE NEW FIXED CAPITAL EXPENDITURE, CURRENT PRICES, NSW—TREND



Source: State Estimates of New Capital Expenditure (Cat. no. 5646.0).

	Latest period	New South Wales			Australia		
		Latest figure	Change from prior period	Change from same period prior year	Latest figure	Change from prior period	Change from same period prior year
		\$m	%	%	\$m	%	%
Overseas imports into NSW	Jul 99	3 500	-2.7	-7.2	8 181	-52.0	-8.1
Total overseas exports(c)	Jul 99	1 487	2.4	-7.6	6 656	2.3	-6.1
Export commodities and SITC(d) code—							
Meat and meat preparations (01)	Jul 99	82	7.4	3.1	348	6.1	2.6
Cereals and cereal preparations (04)	Jul 99	107	-3.5	6.0	360	-14.0	11.8
Wool and other animal hair (268)	Jul 99	53	15.0	-19.1	169	2.2	-22.7
Coal, coke and briquettes (32)	Jul 99	299	15.2	-12.7	694	3.3	-16.2
Iron and steel (67)	Jul 99	44	-25.7	-61.0	86	-22.1	-49.8
Aluminium (684)	Jul 99	101	5.9	-2.9	259	-5.3	-19.2
Office machines and automatic data processing machines (75)	Jul 99	34	3.1	-16.7	57	-7.7	-12.9

(a) Figures shown are Customs value.

(b) Figures shown are Free On Board (FOB) values.

(c) Excludes re-exported goods.

(d) Standard International Trade Classification Revision 3.

Source: International Trade database.

	Overseas exports of SITC(d) commodities								
	Overseas imports into NSW	Total overseas exports(c)	Meat and meat preparations (01)	Cereals and cereal preparations (04)	Wool and other animal hair (268)	Coal, coke and briquettes (32)	Iron and steel (67)	Aluminium (684)	Office machines and automatic data processing machines (75)
	\$m	\$m	\$m	\$m	\$m	\$m	\$m	\$m	\$m
<b>1996-97</b>	34 229	17 730	784	1 540	859	3 426	968	993	535
<b>1997-98</b>	38 481	19 680	923	1 588	1 061	4 048	1 168	1 226	522
<b>1998-99</b>	r 42145	r 18007	r 948	1 185	685	3 768	958	1 159	360
<b>1998</b>									
May	3 271	1 672	82	97	67	346	118	109	38
June	3 594	1 643	79	86	49	366	118	126	42
July	3 770	1 610	79	101	65	342	112	104	41
August	3 473	1 601	69	87	43	356	93	99	32
September	3 551	1 635	88	118	60	328	95	111	33
October	3 680	1 529	77	59	74	356	68	106	28
November	3 746	1 519	85	78	73	332	81	91	26
December	3 466	1 691	84	139	67	363	70	91	24
<b>1999</b>									
January	3 020	1 339	70	101	42	337	68	104	18
February	3 093	1 328	79	99	61	272	70	78	25
March	3 761	1 494	91	112	55	305	83	107	29
April	r 3386	1 294	74	95	42	234	56	80	29
May	r 3603	1 512	75	83	57	283	103	92	42
June	r 3595	1 453	76	111	46	260	59	96	33
July	3 500	1 487	82	107	53	299	44	101	34

(a) Figures shown are Customs value.

(b) Figures shown are Free On Board (FOB) values.

(c) Excludes re-exported goods.

(d) Standard International Trade Classification Revision 3.

Source: International Trade database.

## SELF-HELP ACCESS TO STATISTICS

- CPI INFOLINE* For current and historical Consumer Price Index data, call 1902 981 074 (call cost 75c per minute).
- DIAL-A-STATISTIC* For the latest figures for National Accounts, Balance of Payments, Labour Force, Average Weekly Earnings, Estimated Resident Population and the Consumer Price Index call 1900 986 400 (call cost 75c per minute).
- INTERNET* [www.abs.gov.au](http://www.abs.gov.au)
- LIBRARY* A range of ABS publications is available from public and tertiary libraries Australia-wide. Contact your nearest library to determine whether it has the ABS statistics you require.

## WHY NOT SUBSCRIBE?

- PHONE* +61 1300 366 323
- FAX* +61 03 9615 7848

## CONSULTANCY SERVICES

ABS offers consultancy services on a user pays basis to help you access published and unpublished data. Data that is already published and can be provided within 5 minutes is free of charge. Statistical methodological services are also available. Please contact:

<i>INQUIRIES</i>	<i>City</i>	<i>By phone</i>	<i>By fax</i>
	Canberra	02 6252 6627	02 6207 0282
	Sydney	02 9268 4611	02 9268 4668
	Melbourne	03 9615 7755	03 9615 7798
	Brisbane	07 3222 6351	07 3222 6283
	Perth	08 9360 5140	08 9360 5955
	Adelaide	08 8237 7400	08 8237 7566
	Hobart	03 6222 5800	03 6222 5995
	Darwin	08 8943 2111	08 8981 1218

*POST* Client Services, ABS, PO Box 10, Belconnen ACT 2616

*EMAIL* [client.services@abs.gov.au](mailto:client.services@abs.gov.au)



2130710010995  
ISSN 1031-8534

RRP \$16.00